

Click SMS

SMS Multi-User

ClickSMS Ltd
7a Parkside Road
Leeds. LS6 4LY.
West Yorkshire.

Tel:
Email:
Web site:

+44 (0) 1132 307333
info@clicksms.co.uk
www.clicksms.co.uk

Introduction

Administer your own SMS service with the Click SMS Multi-User text messaging system. The administrator account has all the functionality provided with a standard SMS account (see <http://www.clicksms.co.uk/bulksms.php>) but with additional web based options for managing SMS sub-accounts. Detailed online reporting enables you to track message delivery and monitor SMS credit usage for internal billing/invoicing purposes.

Sub-account administration features:

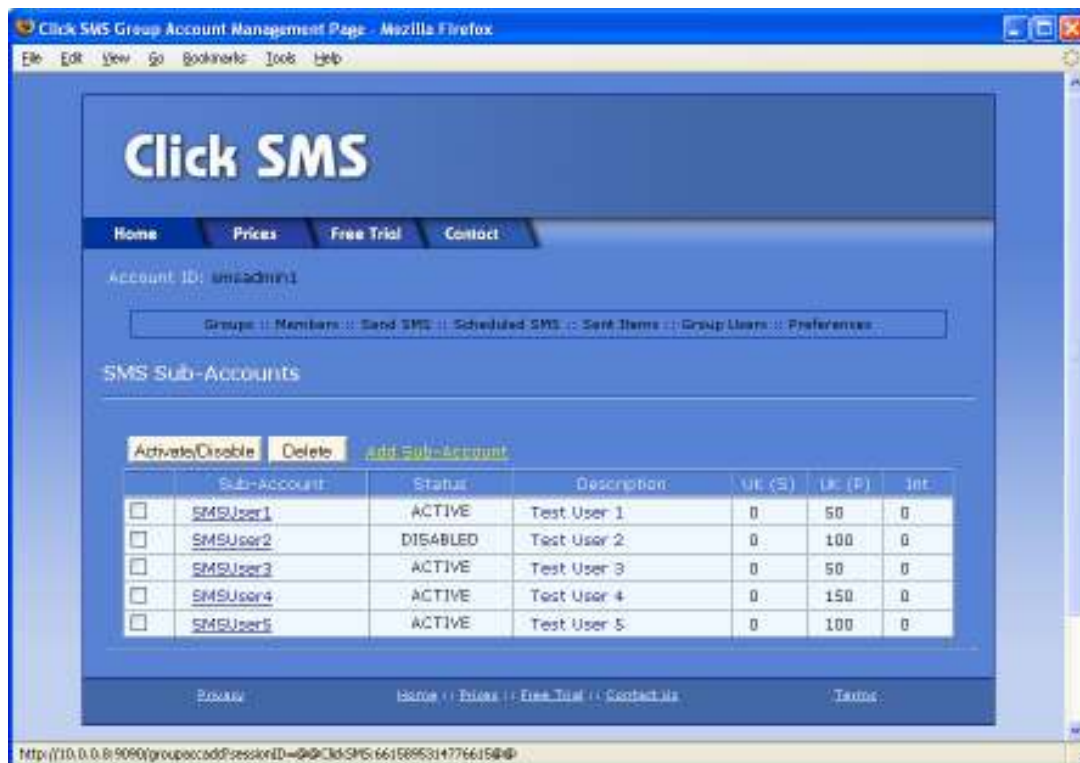
- Add/delete/modify SMS sub-accounts.
- Maintain sub-account SMS credit limits.
- Enable/disable sub-account message sending.
- View sub-account message dispatch/delivery details.

The above sub-account controls also apply to sub-account users who submit SMS messages using the Click SMS message HTTP API.

Getting Started

An 'Administrator' account id and password are provided enabling you to logon at the Click SMS website located at: <http://www.clicksms.co.uk>.

Selecting the **Sub-Accounts** menu option after logging in presents you with the **SMS Sub-Accounts** page displaying the sub-accounts you currently have set-up, the status of each account and the number of SMS credits remaining on the available message tariffs.



The following actions can be taken on the **SMS Sub-Accounts** page displayed above:

To activate or disable an SMS sub-account from sending messages tick the checkbox next to the sub-account name you wish to make the change to and click the **Activate/Disable** button. The new account status will be displayed in the **Status** column. If set to **DISABLED** the sub-account user can still log in but will not be able to send SMS messages.

To delete an SMS sub-account entirely, tick the relevant checkbox and click the **Delete** button. The deleted sub-account will not be displayed again. Note: The full history of SMS messages sent by the deleted account will still be viewable by the sub-account administrator.

To add an SMS sub-account user, click on the **Add Sub-Account** menu link. The following page will be displayed.

The screenshot shows a web browser window titled "SMS Group Account User Add Page Mozilla Firefox". The page content includes a navigation menu with "Home", "Prices", "Free Trial", and "Contact". Below the menu, the account ID "smsadmin1" is displayed. A breadcrumb trail shows "Groups :: Members :: Send SMS :: Scheduled SMS :: Sent Items :: Group Users :: Preferences". The main section is titled "Add Sub-Account" and contains a form with the following fields: "Sub-Account Name", "Password", "Confirm Password", "Description", and a checkbox labeled "Enable Password Control". Below the form is a table for "Message Credits" with columns for "Total" and rows for "UK - Standard", "UK - Plus", and "International". The "Save" button is located at the bottom of the form.

On this page you can enter the sub-account login details, the initial password and the number of SMS credits to be allocated to the sub-account user. Ticking the **Enable Password Control** box enables the sub-account user to set their own password once logged in. Click on the **SAVE** button to store the entered details.

Note: Any number of SMS message credits can be allocated to a sub-account user but the Administrator account itself must always have enough SMS credits available when the sub-account user sends a message.

To modify an SMS sub-account click on the underlined sub-account user name on the **SMS Sub-Accounts** page (see above). The following page will be displayed.



On this page you can modify the sub-account login details and password, enable/disable user password control and add/subtract SMS credits for the sub-account user.